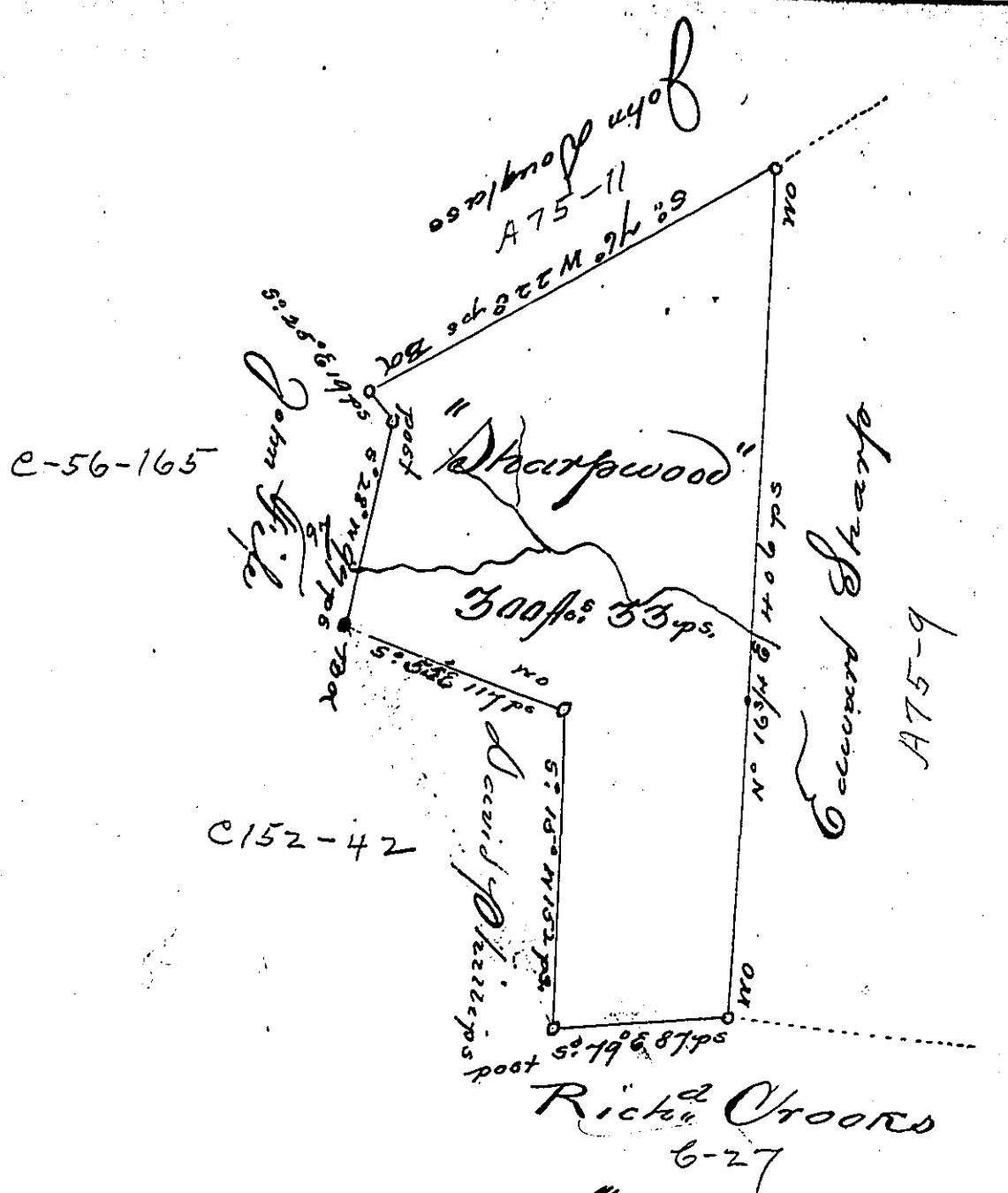


8  
P-59-415  
1896



A Draught of a Survey called "Sharpwood" situated on the waters of Peters Creek in Washington County, containing 300 Act. 33 ps. and the usual allow<sup>ce</sup> for Roads &c, executed March 21<sup>st</sup> 1786, in Pursuance of a warrant granted to Edward Sharp for 250 Act. dated Feby 1<sup>st</sup> 1786.

Cresley Nevill }  
Matt<sup>r</sup> Ritchie } Jrs

Dan<sup>l</sup> Brodhead Esqr  
J. Gen<sup>l</sup>

Now Mifflin township Allegheny County.

IN TESTIMONY that the above is a copy of the original remaining on file in the Department of Internal Affairs of Pennsylvania, made conformably to an Act of Assembly approved the 16th day of February, 1833, I have hereunto set my Hand and caused the Seal of said Department to be affixed at Harrisburg,

this first day of January, 1901,

James W. Fatta  
Secretary of Internal Affairs.